

March 2019 | Vol. 6 | Issue 59 | ₹200

DESIGN detail

the architecture magazine

FLOATING
'R's OF
SRINAKARIN
DERSYN STUDIO CO, LTD

KUMBH MELA
THE CITY WITH AN EXPIRY DATE
AR. PRASANTH MOHAN

AGE is
NOT A LIMIT
MINDSPACE

CHANNELLING THE WINDS

Text : Ridha Fathima / Photos: Vibhor Yadav, Conarch Architects

The Penthouse Pafekuto is located in an upscale locality of Ghaziabad, Uttar Pradesh. The client owns the top two floors of a high rise apartment and the rights to use the terrace as private property. The architect helped turn the two floors and the terrace into a home that channels the winds and is draped in lush greenery. The project stands out for the design that does not resort to bland opulence but has given an emphasis on livability of the abode.

This project was commissioned because the client's family frequently travelled to the city and they wanted a comfortable place to stay during these visits. They were very collaborative with the architects throughout the process. The architects sought to create a design that transforms the generic layout into a functional and versatile living space within the limitations of it being part of a high rise apartment. The constraint was that the architects couldn't change the plumbing and electrical services and had to work around the already defined structural system.



In order to enhance the livability, certain interventions were strategically made. Each level has a significant amount of green space. Each room in the apartment would have a vista of lush vegetation even from the kitchen. Moreover, the two levels, pierced by the staircase, would have good air movement due to the wind direction and positioning of the staircase. There is no direct incident solar radiation on the glass facades; the heat gain is minimal, resulting in low cooling load requirement. These interventions

ensures that the house would have passive cooling and the air conditioning need only be used for the extremely hot months. There are two garden spaces on the two levels. The first floor garden has double height ceiling. This garden can be viewed from the garden on the next floor. The many landscaped open to air portions in the layout helps to establish a connection to nature most high rise apartments lack. This design helps to do so with the advantage of the beautiful view of living in the sky.

FACT FILE

PROJECT	: PENTHOUSE PĀFEKUTO
LOCATION	: GHAZIABAD, UTTAR PRADESH, INDIA
DESIGN PRACTICE	: CONARCH ARCHITECTS
PRINCIPAL ARCHITECT	: AR. NITISH GOEL
PROJECT TEAM	: PUSHPLATA DINKAR, TANYA KUMAR, USHA NARAIN, SUMAN SINGH.
YEAR	: 2018
AREA	: 18,900 SQ. FT.





The azure blue wall give a beautiful contrast to the otherwise beige palette



Passive cooling methods employed by the designers ensure that air conditioning need only be done in the hottest months



The interiors are composed of a beige palette in furnishing and white surfaces



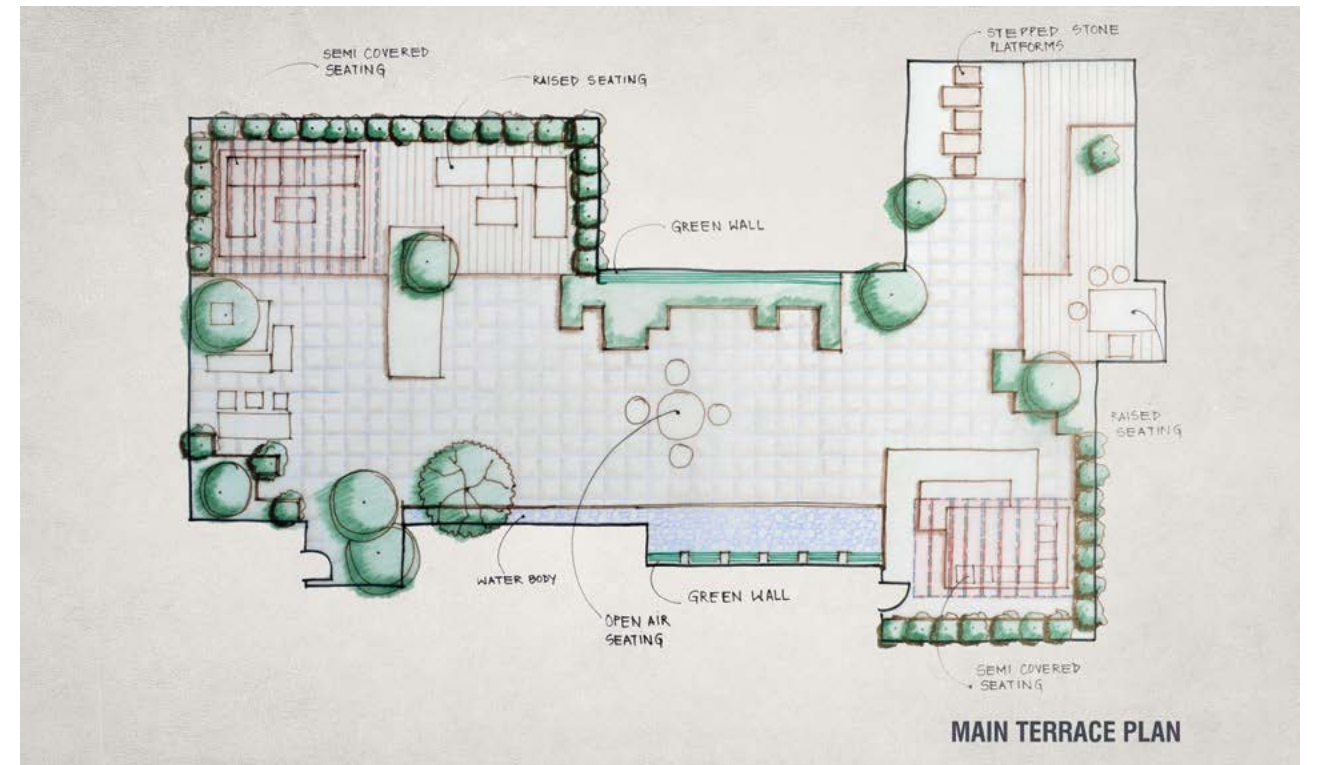
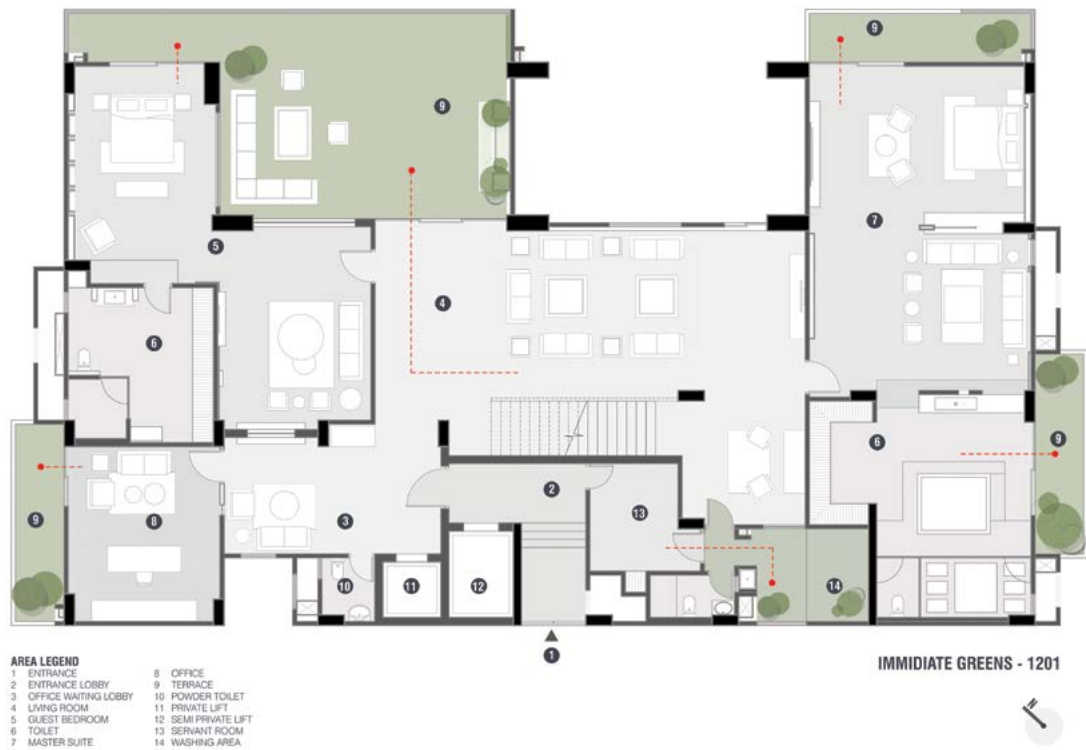
Ar. S K GOEL

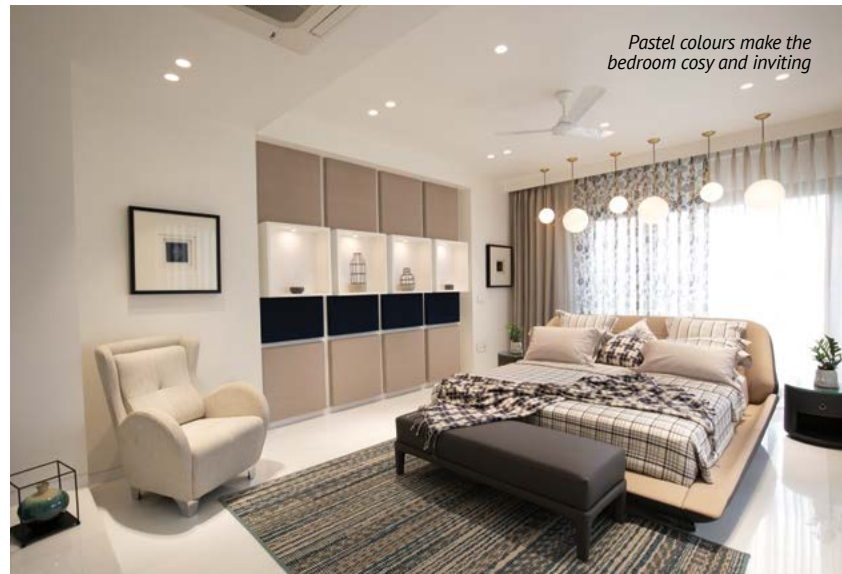
CONARCH ARCHITECTS

Conarch is a Delhi based architectural design firm founded by Ar. Rakesh Dhar and Ar. S K Goel in 1988. The duo decided to form a partnership firm after realising their likeminded vision while working as junior architects together in a firm after graduation. They have come a long way from their humble beginnings but retain their core principles in design to this day. They seek to design spaces that best reflect the client's needs, aspirations, and identity. The firm constantly grows with their zeal to find better solutions in each design. Further, their non- hierarchical and collaborative office helps to harmonise ideas of the members to materialise well informed solutions.



The simplicity in material choices and colours impart harmony to the interiors





Pastel colours make the bedroom cosy and inviting



Stone finished bathroom



View of master bedroom from the bathroom

The colour palette of the house is kept minimal. The white walls help to enhance the beauty of the furnishing and artworks. The staircase is used as an artistic element in the house. The staircase walls are painted a bright azure blue and the wooden stairs are cantilevered, which gives the impression that they are hovering in the air. Besides the staircase there are no overpowering colours in the palette. The creamy hues enhance the cosy, inviting ambience.

Luxury residential projects always stand in threat of being an exercise in finding costly curios and encasing every surface in marble. Clients may have a one dimensional view of what luxury may stand for but when they hire an architect, he or she has a responsibility to streamline their aspirations into viable, well-grounded solutions. This project succeeds in this aspect. It creatively amalgamates luxury with livability, finding a common ground between the client's aspirations and the designer's vision.



ALTURA

THE SMART PAINT FOR INTERIOR & EXTERIOR

2in1

Can be used for both Interiors and Exteriors

Low Wastage Smart Paint

IMPORTANT FEATURES

Less wastage

Low VOC

Economical

Lead <90PPM

Less Dirt Pickup

MRF Corp Limited | For enquiries call - 99403 99407 | www.mrfpaints.com
ZONAL OFFICES : New Delhi | Noida | Kolkata | Mumbai | Bengaluru | Chennai
[f](https://www.facebook.com/MRFCorplimited) /MRFCorplimited [i](https://www.instagram.com/MrfCorpLimited) /MrfCorpLimited [G+](https://www.linkedin.com/company/mrfcorp) /mrfcorplimited <http://www.mrfpaints.com>