



Mini Potence Pivotante | Nemo

With advancing technology, workspace productivity can be enhanced through creativity, flexibility, and innovative ideas.



multi use workplace shared as work pool like car pool, tiny but effective at Hyderabad office of SP Anchuri

Embellishing innovation spaces

Workplace means a space that provides freedom for work. Traditionally, the typology was different for the way work is done in banks, shops, offices, etc. Also, after a decade of information technology, modern trend emerged this century in working professionals and employees, and even business environment changed drastically in terms of its processes evolved, reformed outreach and communication, cycles, longevity and improved processes.

Ergonomics and workplace design must

The workspace needs to be an ergonomic and well-connected location, designed to ease interaction and connectivity, says Ar. Er. S. P. Anchuri, Chief Consultant, Anchuri and Anchuri.

Workspace design inclusive of elements like colours, textures, air quality and ergonomics can add to human comfort. Lighting that mimics sunlight and is time- or season-sensitive, allows bio rhythms to be maintained. Finally, the interior design and choice of colour, texture and decor is changing and there is an active interest in making spaces feel free, he adds.

Latest design trends and evolving ideas attract the most eager and seasoned experts into the team, according to Ar. S.K. Goel, Conarch Architects.

"Segregation of space planning like workstations, conference rooms, waiting lounges, offices, accounts and other ancillary areas, furniture, space partitions and ceilings should be designed such that they could be integrated within to re-create the subtlety of ambient day lighting," he adds.



The work space needs to be an ergonomic and well-connected location, designed to ease interaction and connectivity.

► Ar. Er. S. P. Anchuri, Chief Consultant, Anchuri and Anchuri



The furniture that fills your workspace & the way it's arranged can play a crucial role in worker productivity and team morale.

► Amol Prabhu, Partner, Shashi Prabhu & Associates



Latest design trends and evolving ideas attract the most eager and seasoned experts into the team.

► Ar. S.K. Goel, Conarch Architects



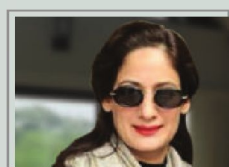
Wooden interiors can have several positive impacts on both physical and psychological health of employees in the long run.

► Avijit Marwah, Director, EvoWood



What remains lifelong is the basic design, i.e. the ergonomics and utilisation of space to its optimum.

► Ar. Prem Nath, Principal Architect, M/s Prem Nath & Associates



Technology has allowed new materials to enter into the world of interiors and has added precision into the craft.

► Arunima Kukreja, Interior Designer, CP Kukreja Architects

Optimum space utilisation

While the basic design stays lifelong, current trend is to keep it minimalistic, and space planning has also got much sleeker with the costs of commercial spaces skyrocketing, says Ar. Prem Nath, Principal Architect, M/s Prem Nath & Associates.

Interior design on productivity

Trends in office design are constantly evolving. The furniture that fills a workspace and the way it's arranged can play a crucial role in worker productivity and team morale, says Amol Prabhu, Partner, Shashi Prabhu & Associates. As more millennials enter the workforce, managers must ensure their office environments feel welcoming and foster an atmosphere conducive for work and collaboration, he adds.

Most preferred decor themes

Closer to nature

Biophilic design is an approach that seeks to connect building occupants more closely to nature by adding natural elements such as wood, greenery, water bodies, abundant natural light and ventilation to the space. It represents the perfect amalgamation of nature, design and innovation and has been incorporated in many working spaces, says Avijit Marwah, Director, EvoWood.

For optimum productivity, an employee must feel connected to its workspace, and they are more likely to spend longer hours at work if the space is inspiring.

Wooden interiors can have several positive impacts on both physical and psychological health of employees in the long run, says Marwah.

The concept of interiors has metamorphosed into a vibrant analogy of our times like clothing fashion, where colours change with season, fabrics change with the latest collection and furniture with the latest designer on the bloc, says Arunima Kukreja, Interior Designer, CP Kukreja Architects.

Eco-friendly interiors with natural lighting

Eco-friendly interiors with natural lighting streaming in will elevate the mood of the employees with better working conditions, says Designer Nandita Ghatge, Kagal Craft.

The old high ceilings can be kept to keep the heat away with minimal use of air conditioners. Adding aroma adds another ethereal dimension to a working space. Fresh flowers and plants will help create a home-like environment to an otherwise spartan office, adds Ghatge.

Interiors can aid meeting the goal of enhancing collaboration through creativity, flexibility, and innovative ideas. A suitably designed workspace with an open plan will help free flow of ideas, according to Designer Rajesh Achrekar, Kagal Craft.

Being closed in an air-conditioned, high rise office means the essential

