

Alia Bhatt

THE MOVIE STAR
NEXT DOOR

HOME DESIGNED
by Richa Bahl

“Working with Richa on my first ever house was such a fun experience.. what amazed me was how she totally converted the vibe of the space 360 degrees from when I bought it to when I moved in. Her eye for bringing out a personality through design is truly admirable. I can safely say that my house looks wayyyyybetter than I imagined it. And that’s always a good thing :)” -Alia Bhatt

JK House

Principal Architect : S.K. Goel



Architect S.K. Goel

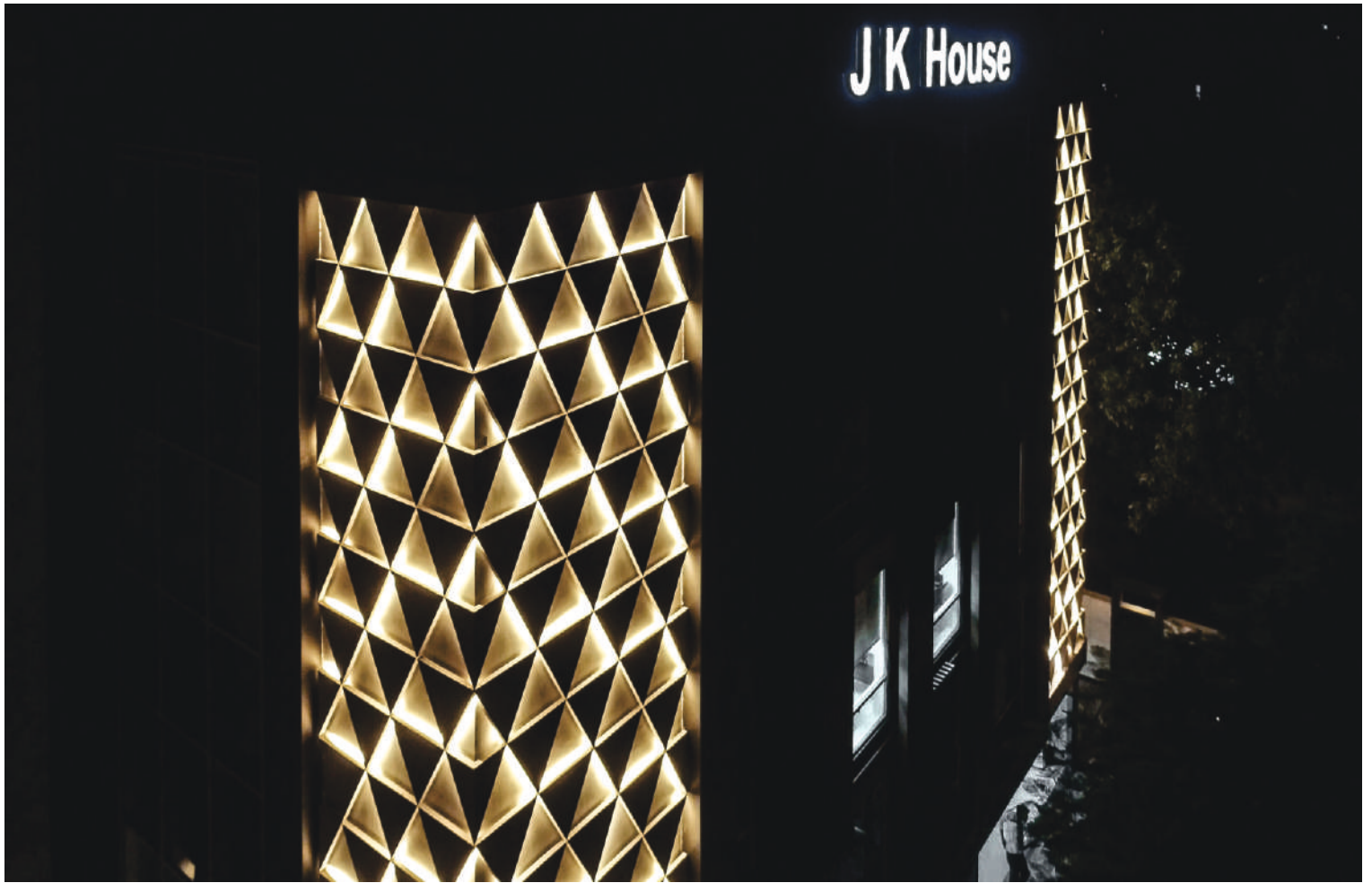
Ar. S.K. Goel graduated from School of Planning & Architecture, New Delhi in the year 1984 and has since been serving architectural profession with utmost integrity and sincerity. His approach is to interpret the project's complexity and challenges as a positive creative force in the creation of spaces. Innovation in building construction detailing is his forte'. His flair for evolving unique design solutions best suited for individualistic requirements of clients is rooted in his scientific outlook which results in pragmatic than purely artistic solutions. He came to design by way of science. His penchant for graphical problem solving results from his love for the subjects of Geometry and Engineering Drawing. His innate ability to be more right or wrong but not entirely either, helps him accommodate various point of views and eases the process of concluding design discussions.

He has been instrumental in setting up a work environment which fosters teamwork and encourages ideas to emerge from all, regardless of seniority, title or background. He considers the construction team committed to projects just as valuable as the in-house design professionals for their exceptional capabilities to comprehend and execute his experimental, untested yet worked out design solutions.

Fact File

Project Name: JK House
Client: Sh. J.C. Chaudhry
Architect: Conarch Architects
Principal Architect: S.K. Goel
Location: New Delhi
Plot Area: 1,350 Sq. Yards
Built-up Area: 40,000 Sq.Ft
Completion Year: 2019
Project Scope: Architectural and Interior design
Turn-Key Builder: RP Realtech Pvt Ltd
Content: Neha Goel
Photography: Prashant Dubey, Nitish Goel







Located in an uber dense Delhi locale, JK House forms a distinct urban landmark. The building design is both functional and expressive in nature, its lively sculptural facade is rich in simplicity and proportions. The backlit geometrical surfaces transform a mundane building corner on a busy street into a point of interest and heighten the excitement of the onlooker.

Built on an urban infill site and situated within four minute walking distance from a transit hub, the project is appropriately sited to benefit from the city's growing mass public transit system. Building design takes advantage of the proximity to the available alternative transportation system by minimizing the onsite area dedicated to parking. For a building accommodating about 350 employees, the project provides for code minimum parking of 25 stalls only.

The structure comprises of six full storeys; floor plates are a combinations of open-plan offices, individual offices, conference and meeting rooms. The stilt and basement floors have service areas, break out spaces and parking. On floors above are the office units with meeting areas and open-space workplaces. The roof area is greened and partly designed as a roof terrace.

Based on the interactions with the client, Sh. J.C. Chaudhry, the primary goal was to create a positive, comfortable and productive work environment. Characteristic of Delhi's urban area, the site is a long narrow rectangle with existing built properties on three sides, with front, rear and side setbacks. Long narrow rectangular sites pose a challenge to naturally light work spaces at lower levels and areas away from exterior walls. Given the critical role daylight plays in occupant mental and physical health, a generous sized atrium was introduced in the middle to light the building from within. Low height desk partitions, light material finishes and full height glass partitions help daylight penetration in deeper areas of the floor plate. The building emphasizes occupant comfort with ample daylighting, natural materials, breakout spaces and a large landscaped terrace.







The interior work spaces are crafted with dramatic angles in subdued contrasting colour palette to create a sleek, uncluttered and striking experience. The custom lighting, built in furniture, ceiling and wall design come together as a singular cohesive space to exude warmth required for the ease of business discussions. The muted color palette and the quiet aesthetic of the straight lines vitalizes the participants, and enables effective and precise communication. It is here the company's deals are sealed, ideas are formed, and plans are put into action.

Innovative architectural solutions come with a set of equally complex and demanding building construction processes. Transforming a building design into a physical reality is a challenge no less. Throughout the construction of the project we collaborated with RP Realtech Pvt Ltd, who were responsible for construction execution and providing all of the material, labor, equipment and services necessary for building completion.

