

RNI No. GUJENG/2019/77854

Interior Exterior®

VOL.1 ISSUE 4 THE MAGAZINE FOR INDIAN CONSTRUCTION INDUSTRIES www.interiorexteriorgroup.com JANUARY / FEBRUARY / MARCH 2020 ₹ 200/-

homedeco INDIA
www.homedeco.co.in

ELEVATED LIVING
haiqu

FLEXIBOND
AN ATTACHMENT

Editor's Letter

Design & construction scenario has been progressing at an unprecedented pace at the global level. This past decade has especially witnessed some of the most fluid forms and challenging structural resolutions. The awe-inspiring forms of the shells are complimented by the bespoke art installations and interior elements that are pushing the boundaries of design to provide unfathomable user experiences. It wouldn't be incorrect to say that India is finally catching up with the world when it comes to product design, architecture, interiors, landscape or any of the myriad aspects of the construction industry. As a matter of fact, our industry has progressed and become so imaginative that even as I write it feels crude to use an umbrella term "construction" to encompass works of the professionals who are rather artists working in their respective domains of expertise.

I would take the liberty of speaking on behalf of my magazine as well as everyone related to the Media & publishing industry, 'we are enjoying the surge of innovation as much as the professionals thinking absolutely out of the box', for introducing such concepts and processes is a challenge just as much! Interior Exterior in particular constantly longs to cover the newest, most innovative and utilitarian works that defy the existing norms of design, material and experience.

However, the gap between the progress at the international scale and that in India is still immense. It is in part because of the fact that some of the modern most materials, software, technology and processes are still known to a handful in the Indian community of professionals. The other contributing factors may be the lack of ways through which to educate the masses or disseminate the information on the rapidly changing landscape of the design production. No longer do we appreciate the 'product' alone; we are developing the sensibilities to acknowledge the process which backs the new age inventions.

Architectural reporting and journalism must also contribute in identifying and encouraging the stake holders and the young enthusiasts to take bolder than ever steps and yield infinitely creative manifestations. The vision to put India in a position where it's not competing with the world but leading the world in strategies, practices and results that shatter the rules laid down so far.

Interior Exterior team strives to bring to its readers best of the current lot; however our efforts are dependent on the readers, subscribers & advertisers to reach out to us on a regular basis. Wishing the best to the entire industry, especially the innovators who managed to capture the attention of our team and gave us the chance to publish their brilliant work.

Here's to the progressing industry of a progressing country!

Warm Regards
Ar. Sonam Gupta
(Editor)
editorial.interiorexteriorgroup@gmail.com

Interior Exterior®

Director (Marketing)
Jeram Patel (M. +91 9662361984)

EDITORIAL TEAM
Managing Editor
J. P. Gora
Editor & Creative Strategist
Sonam Gupta
Content Writer
K. Chopra

PRODUCTION & COMMUNICATION TEAM
Communication Head
Jeram Patel
Production Incharge
Hemant Chauhan

SALES & SUBSCRIPTION TEAM
Subscription Incharge
Dhanraj Chaudhary
Asst. Manager Sales
Dhanraj Patel

Head Office
406, 4th Floor, Labh complex,
Opp. Sakar - III, Nr. Income Tax Under Bridge,
B/h. C.U.Shah College Ashram Road,
Ahmedabad-380 014.
Tel.: +91 9662361984, 079-40020184
Email : info@interiorexteriorgroup.com,
interiorexteriorgroup@gmail.com



This issue consists of total 106 pages including cover

Published and Printed by Jeram S. Patel on behalf of Jeram S. Patel
Printed at Plus offset, Basement, 255/2B, Madhur Complex, Stadium Six Road,
Navrangpura, Ahmedabad-380009
Published from N-403 Akruvi Township, Narol-Lambha Road, Narol, Ahmedabad 382405
Editor : Ar. Sonam Gupta
We welcome unsolicited material but do not take responsibility for the same.
Letters are welcome but subject to editing. All rights reserved. Nothing may be
printed in whole or in part without written permission of the publisher. The Editors
do their best to verify the information published but do not take responsibility for
the absolute accuracy of the information. Please do not consider any information
as a base for any kind of survey and decision. All disputes shall be subject to
Ahmedabad Jurisdiction only.

CONTACT @

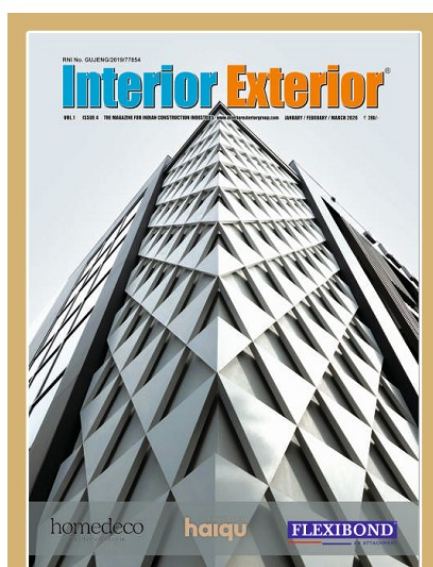
www.interiorexteriorgroup.com

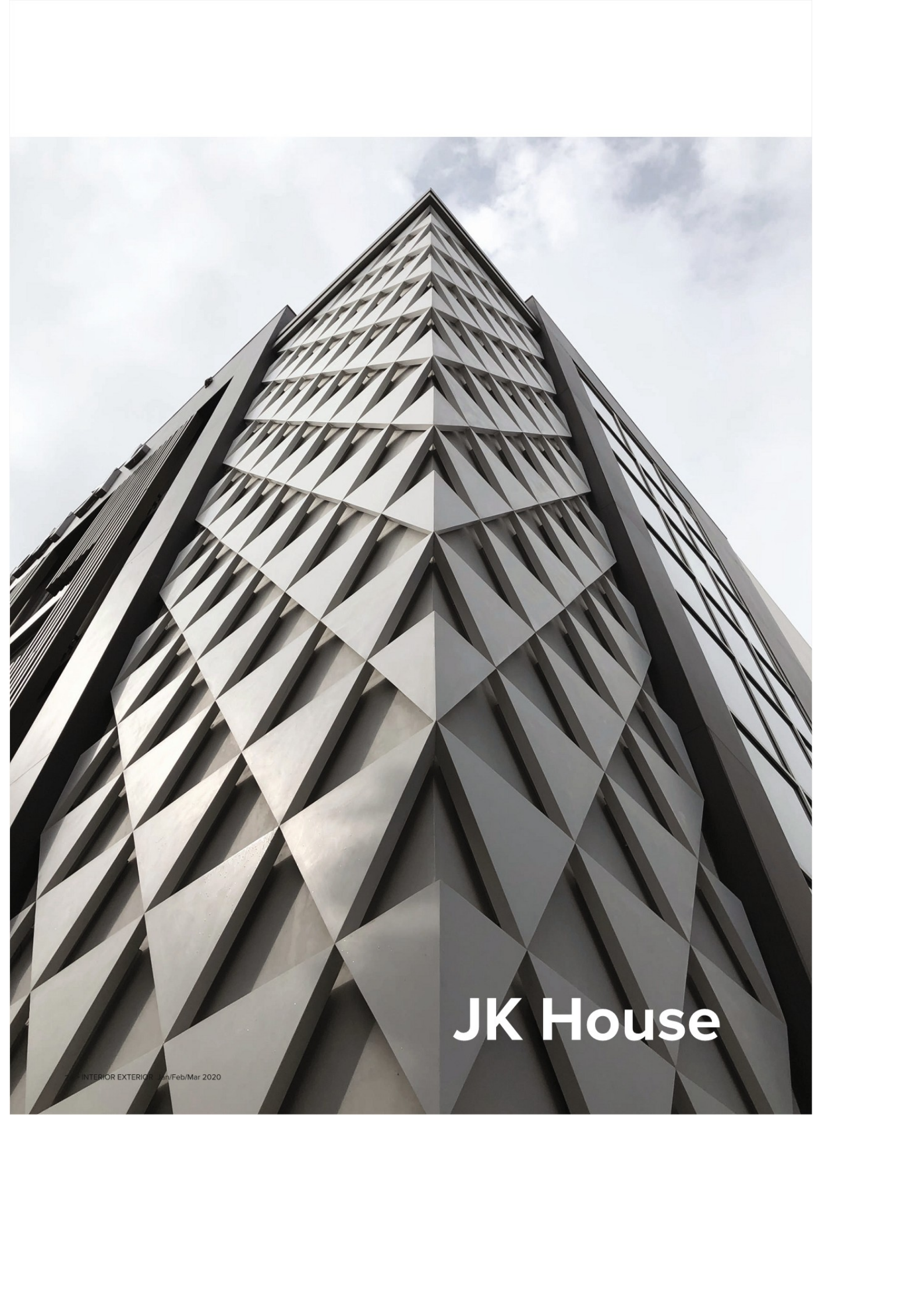
Features

14	SAOTA — Le Pine
22	Conarch Architects — JK House
28	Hiren Patel Architects — Avadh
38	Bridge Studio — Signature-2
44	Invent Architects — Villa Tides
56	SM Studio — Divya Bungalow
60	HV Associates — Mood Tinted Blue
64	Form Space N Design Architects — Bungalow at Lake City
70	Deepti Tangri & Associates — Luxury Residence
76	Anjali Rawat Architects — Adroit Office
80	Deep Breath Architecture Firm — Riverscape Penthouse
86	Allure Homez — Aesthetics & Comfort Design Combinations
90	Infinity Architects — An Inside Look of A Neo-classical Infinity Design

Advertiser's Index

AAC BLOCK	
SURYSHREE BLOCK	20
ALUMINIUM COMPOSITE PANEL	
UMIYA FLEXIBOND	BACK PAGE
ALSTRONG	01
ALUMINIUM DOORS & WINDOWS & FACADE	
ART-N-GLASS	36-37
STELLAR	54-55
BATHROOM ACCESSORIES	
DURAVIT	49
COMPOSITE PIPING SYSTEM	
KITEC	27
CONSTRUCTION CHEMICAL	
MARMO	51
ELECTRICAL ACCESSORIES	
COSMO ELECTRO INDUSTRIES	04
FALSE CEILING	
METALIUM ARCH PRODUCTS	59
FOAM & FURNISHING	
TIRUPATI FOAM	85
LIGHTS	
SUNRISE LIGHT HOUSE	69
LOCKS / HARDWARE	
PLUS POINT BUILDWARE PVT LTD.	42-43
MARBLE	
BESTONE	100 & BACK INSIDE
SKYZ STONES	TITLE GET FOLD
SHRI PARASNATH	75
MODULAR FURNITURE	
AFC	11
CPM SYSTEMS	09
ERGO SPACE	33
QUARTZ STONE	
HAIQU QUARTZ	02-03
RAILING	
S-GRIP	07
RUGS & CARPETS	
SARASWATI GLOBAL	13
SANITARYWARE	
NEXGEN	05
SOLAR PRODUCTS	
P&N ENGINEERING	97
SOLID SURFACE	
UMIYA FLEXIBOND	BACK PAGE
SWIMMING POOL	
DESJOYAUX POOL	63
UPVC DOORS & WINDOWS	
ENCRAFT INDIA	21
LINGEL	06
PROFINE INDIA WINDOW	08
WINDOWS BLINDS	
AWESOME DESIGNS	89
WINDOWS & FACADE	
MIXX WINDOWS	78-79





JK House

INTERIOR EXTERIOR Jan/Feb/Mar 2020

Located in an uber dense Delhi locale, the corporate office of a national educational institute forms a distinct urban landmark. The building design is both functional and expressive in nature, its lively sculptural facade is rich in simplicity and proportions.

Located in an uber dense Delhi locale, the corporate office of a national educational institute forms a distinct urban landmark. The building design is both functional and expressive in nature,

its lively sculptural facade is rich in simplicity and proportions. The backlit geometrical surfaces transform a mundane building corner on a busy street into a point of interest and heighten the excitement of the onlooker.

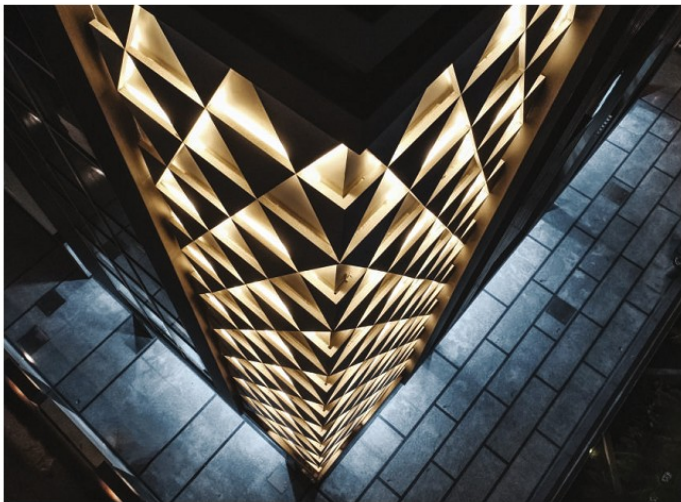
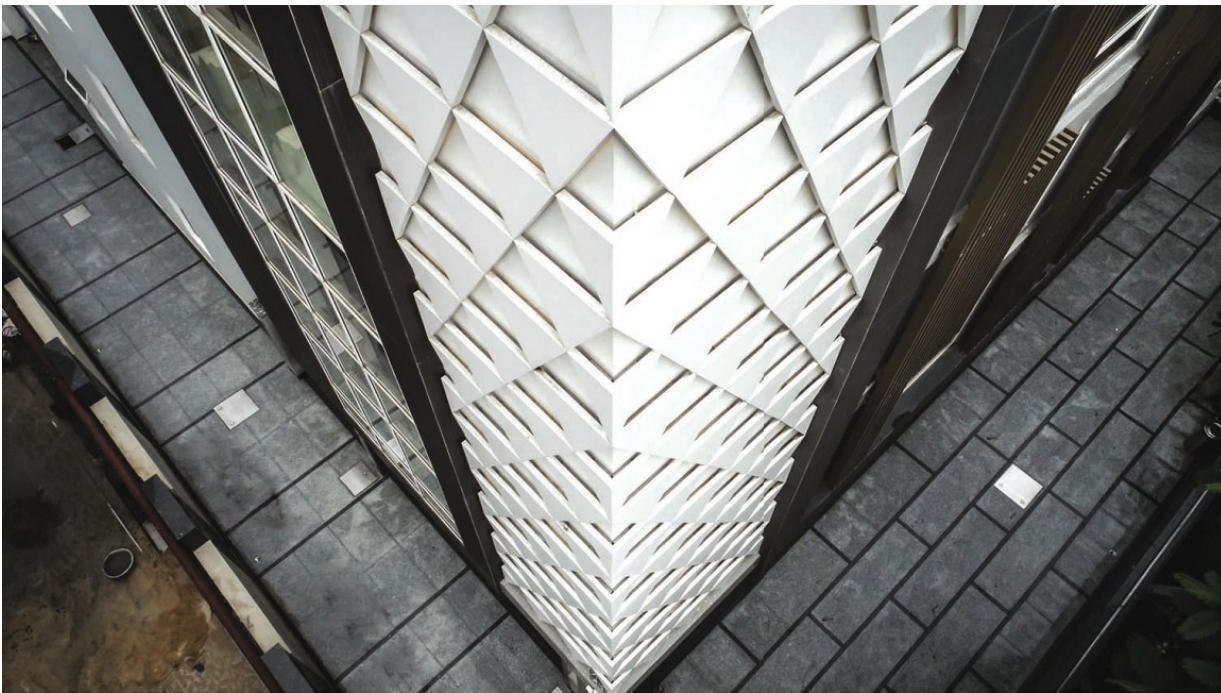
Built on an urban infill site and situated within four minute walking distance from a transit hub, the project is appropriately sited to benefit from the city's growing mass public transit system. Building design takes advantage of the proximity to the available alternative transportation system by minimizing the onsite area dedicated to parking. For a building accommodating about 350 employees, the project provides for code minimum parking of 25 stalls only. The structure comprises of six full storeys; floor plates are a combinations of open-



Ar. SK Goel



Conarch Architects
204-B, Sagar Complex,
L.S.C., New Rajdhani Enclave,
Main Vikas Marg, Delhi-110092.



Principal Details:

Principal Architect : Ar. Sk Goel
 Turn-Key Builder : RP Realtech Pvt Ltd
 Client : Sh. J C Chaudhry
 Location : 32, Pusa Road
 Principal Detail : Ar. Sk Goel
 Principal Designer : Ar. Sk Goel
 Landscape Consultant : Conarch Architects
 Project Name : JK House
 Façade Engineering : Conarch Architects
 Contractors : RP Realtech Pvt Ltd

plan offices, individual offices, conference and meeting rooms. The stilt and basement floors have service areas, break out spaces, multipurpose halls and parking. On floors above are the office units with meeting areas and open-space workplaces. The roof area is greened and partly designed as a roof terrace.

Based on the interactions with Sh. J C Chaudhry, the primary goal was to create a positive, comfortable and productive work environment. Characteristic of Delhi's urban area, the site is a long narrow rectangle with existing built properties on three sides, with front, rear and side setbacks. Long narrow rectangular sites pose a challenge to naturally light work spaces at lower levels and areas away from exterior walls. Given the critical role daylight plays in occupant mental and physical health, a generous sized atrium was introduced in the middle to light the building from within. Low height desk partitions, light material finishes and full height glass partitions help daylight penetration in deeper areas of the floor plate. The building emphasizes occupant comfort with ample daylighting, natural materials, breakout spaces and a large landscaped terrace.

The interior work spaces are crafted with dramatic angles in subdued contrasting colour palette to create a sleek, uncluttered and striking experience. The custom lighting, built in

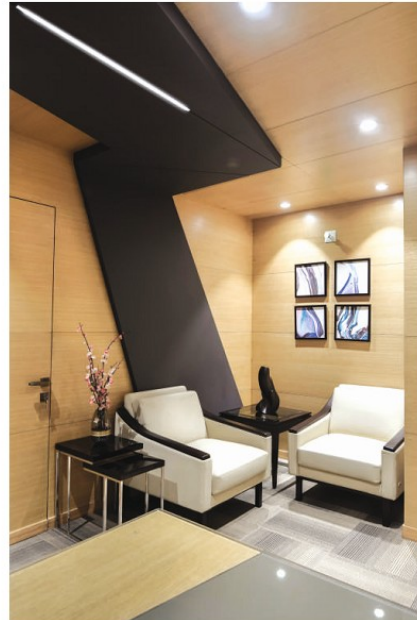
Product Details:

Air conditioning	: Daikin
Façade materials	: LG Hausys HI-MACS, Laminam by Stonex India, Kerakoll adhesives, Saint Gobain glass, Apex paint, European Aluminium sections in curtain glass & windows.
Structure	: Tata Steel, Ultratech Cement
Flooring	: Italian marbles, Kajaria vitrified tiles, Indian granites, Latticrete adhesive
Woodwork	: Green ply, Green & Century laminates, Century veneer.
False ceiling	: Armstrong grid ceiling
Lighting	: Philips
Wires/Cables	: Finolex & Havelles
Plumbing Fixtures	: Kohler
Data/ Networking	: D Link
Firefighting MS Pipes	: Jindal- Hissar,
Furniture	: Kuka, IDUS
Lift	: Schindler
Hardware	: Hettich, Hafele

**Fact Box:**

Build Area : 40,000 Sq.ft
Site Area : 1366 Sq. Yds
Design Team : Usha Narain, Meena Bisht
Landscape Consultant : Conarch Architects
Year of Completion : 2019
Photography : Prashant Dubey, Nitish Goel





furniture, ceiling and wall design come together as a singular cohesive space to exude warmth required for the ease of business discussions. The muted color palette and the quiet aesthetic of the straight lines vitalizes the participants, and enables effective and precise communication. It is here the company's deals are sealed, ideas are formed, and plans are put into action.

Innovative architectural solutions come with a set of equally complex and demanding building construction processes. Transforming a building design into a physical reality is a challenge no less. Throughout the construction

of the project we collaborated with RP Realtech Pvt Ltd, who were responsible for construction execution and providing all of the material, labor, equipment and services necessary for building completion.